

FURLA

PRESS AUTUMN/WINTER 2010/11

FURLA

The Furla A/W 2011 collection is for an elegant and worldly woman. She's an explorer, escaping from everyday life to exotic lands. She develops an emotional attachment, virtual memories of her travels.

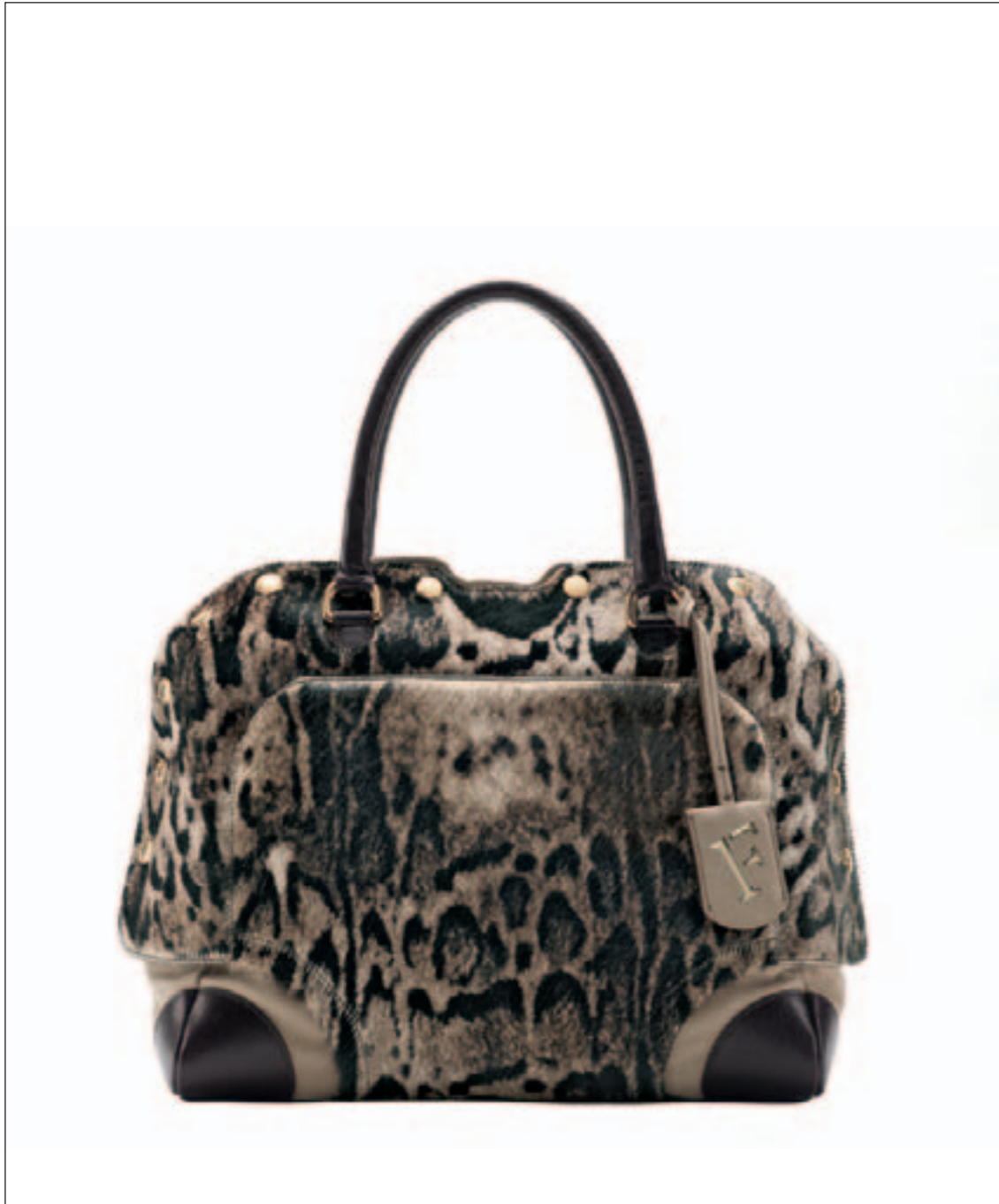
Every detail becomes a tile in the mosaic of her mind. From the leopard print coat, to the reptile skin, to the colors of the stones and butterflies, the delicate tanning of leather, and the weaving in the upholstery fabric.

The new collection is comprised of illusions; repetitive digital techniques that create patterns or new surfaces.

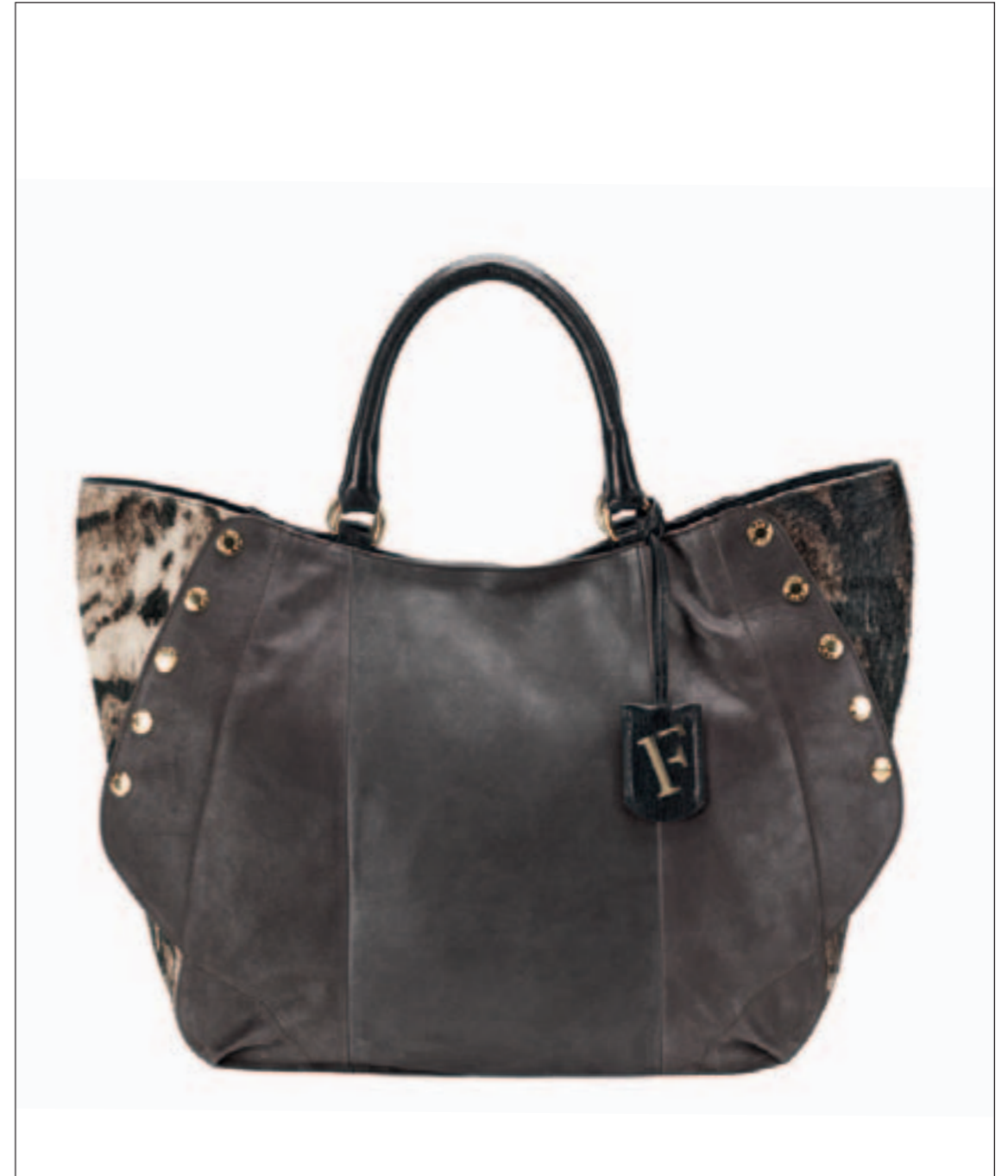
In the early 1900's, one of the great explorers, Freya Stark, sported zippered bags. These elegant silhouettes and feminine forms of yesteryear are transformed in the new collection, updated to be lightweight and functional. Moreover, her old travelling trunks were outlined by a cloth cover. This inspired Furla's collection to include exterior layers. It's a decorative and bold look. The virtual safari illuminates. Fluorescent flashes highlight the natural beauty of the deep and intense jewel tones.



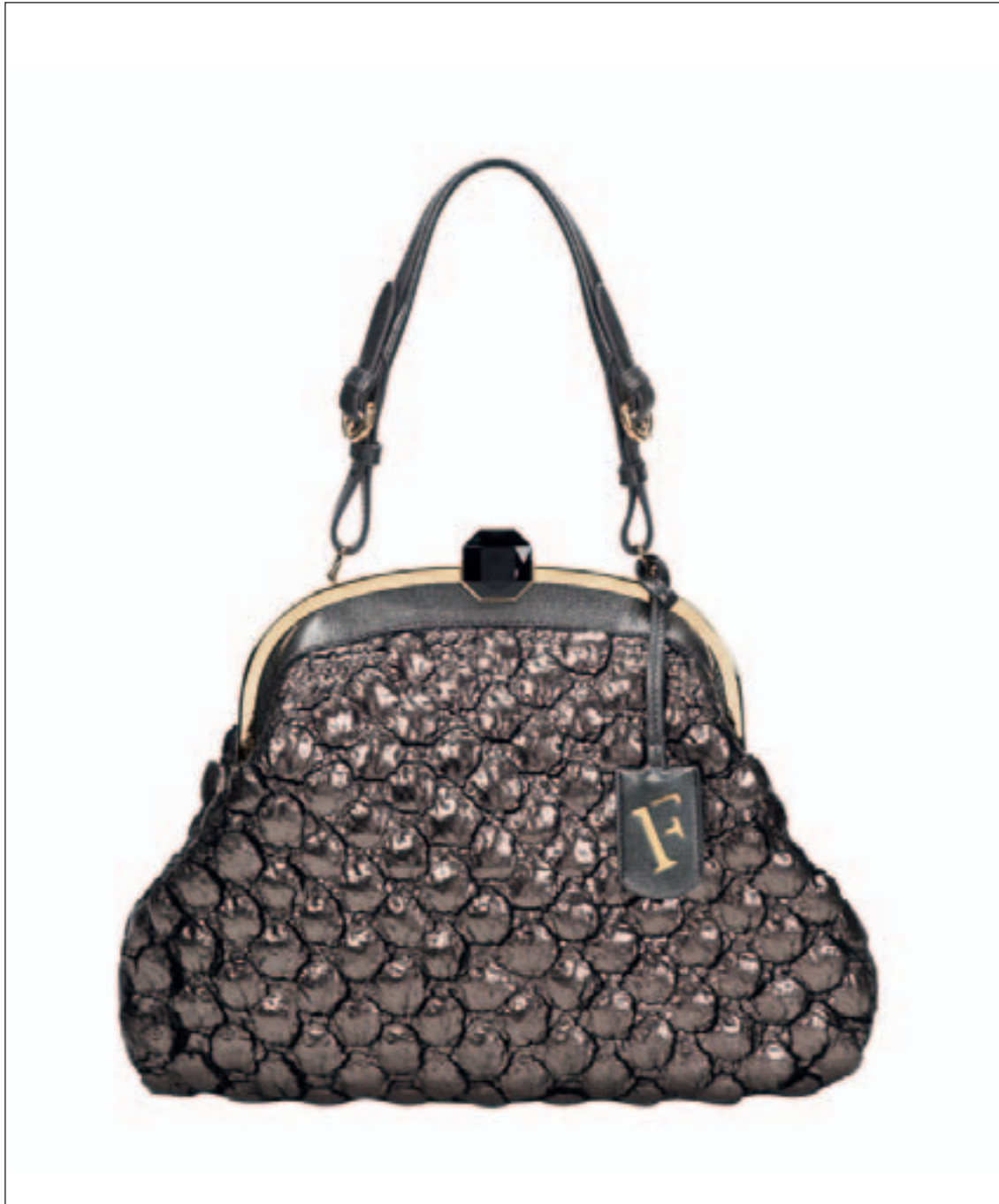
ROYAL BX51
Velvety Effect Calf Leather+Shiny Goat, Sand+Red Earth+Coffee
cm 33x25x14



ROYAL BX51
Himalayan Leopard Printed Pony Skin+Velvety Effect Calf Leather+Shiny Goat, Sand+Coffee
cm 33x25x14



ROYAL BW79
Himalayan Leopard Printed Pony Skin+Velvety Effect Calf Leather+Shiny Goat, Coffee+Sand
cm 40x36x13



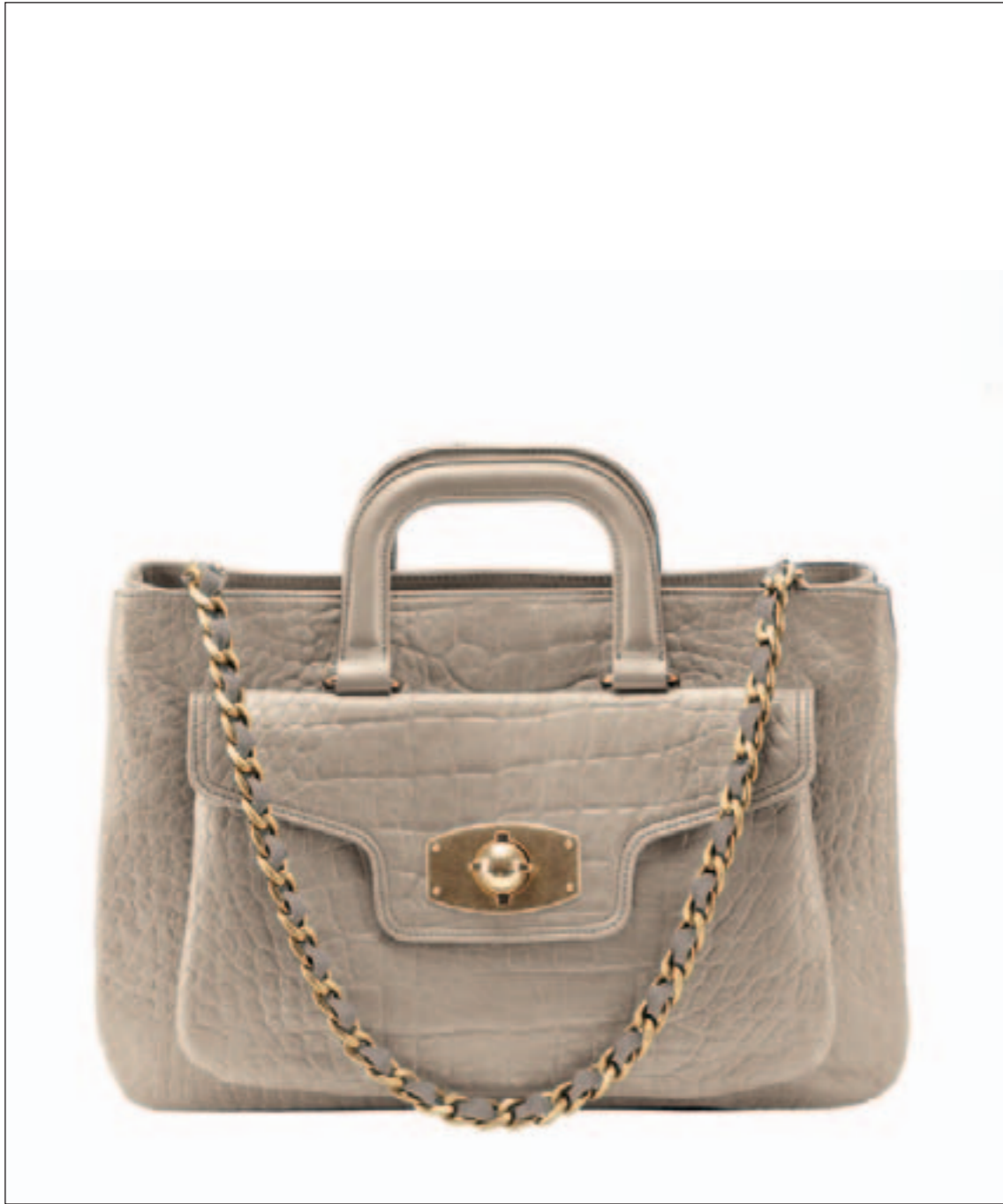
ROYAL B098
Knitting Effect+Metal Goat, Filler Grey
cm 40x29x4



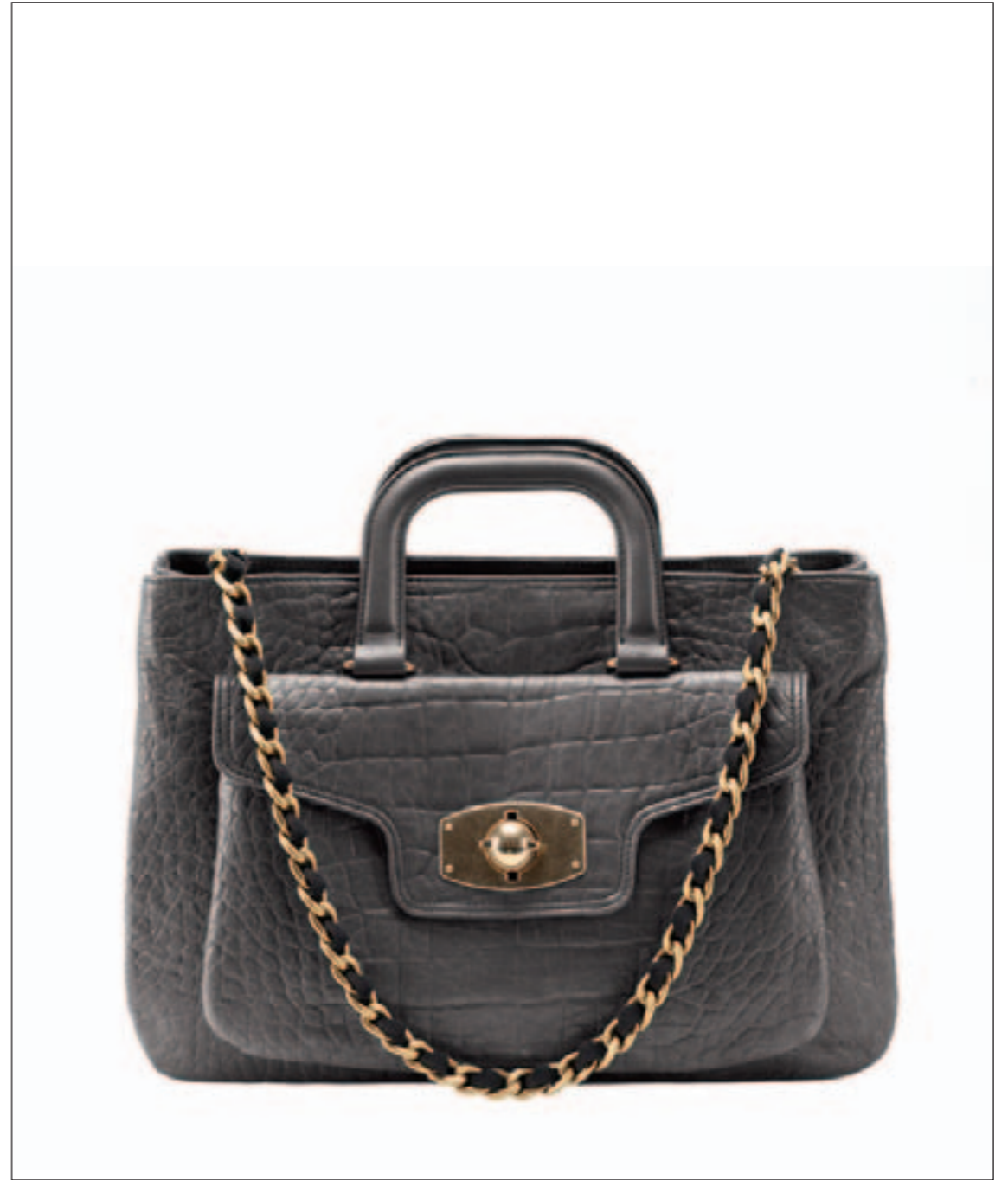
ROYAL B088
Velvety Effect Calf Leather+Shiny Goat, Sand+Coffee+Onyx
cm 40x29x4

available also in

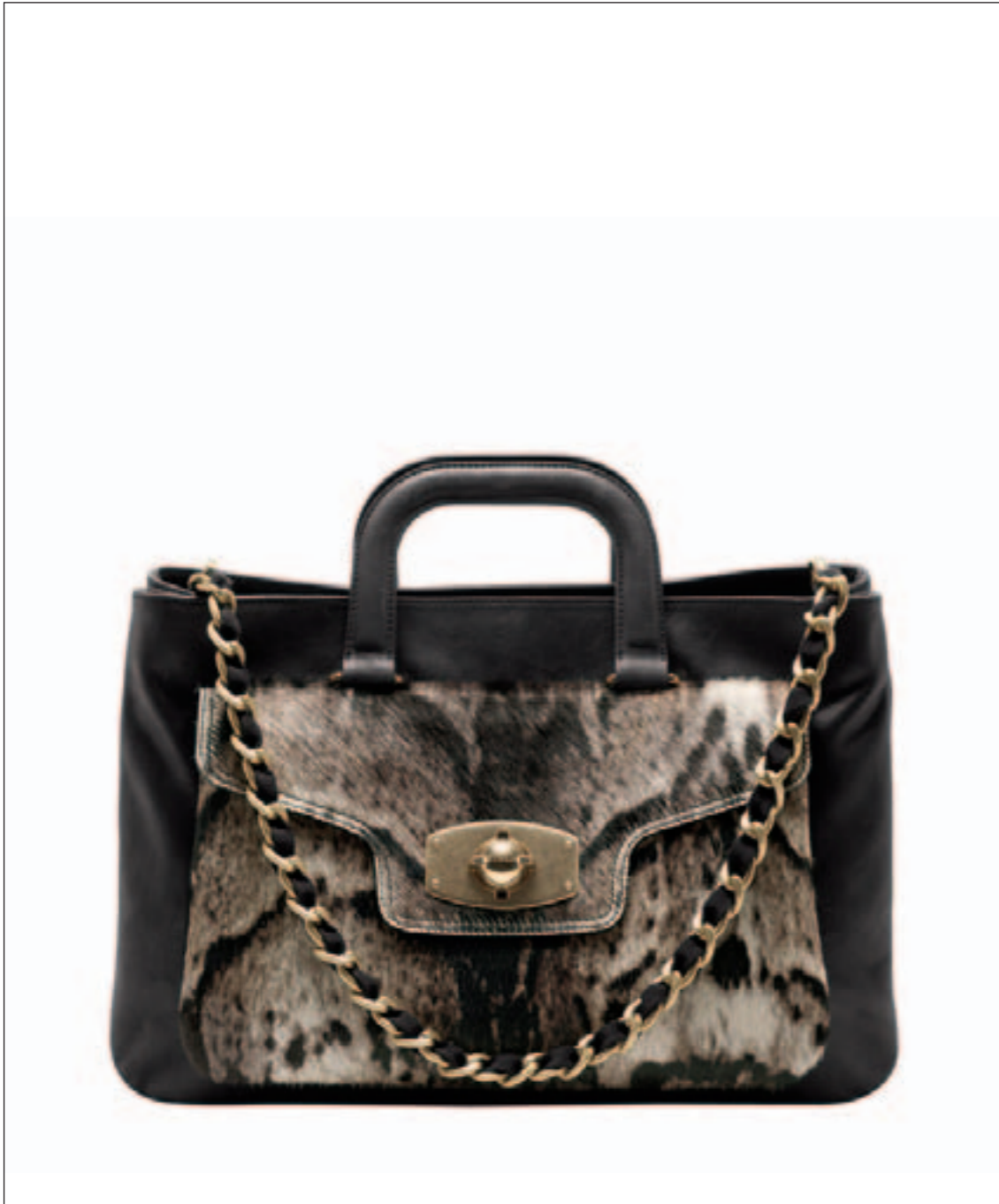




GUGGENHEIM BY73
Crocodile Printed Buffalo Leather + Soft Nappa Leather, Sand
cm 39x28x8



GUGGENHEIM BY73
Crocodile Printed Buffalo Leather + Soft Nappa Leather, Filler Grey
cm 39x28x8



GUGGENHEIM BY73
Velvety Effect Calf Leather+Himalayan Leopard Printed Pony Skin,
Onyx+Sand
cm 39x28x8

available also in Velvety Effect Calf Leather



ARCADIA CATENA BZ47
Soft Nappa Leather, Onyx
cm 34x36x18

available also in Nabuk Crocodile Printed Leather

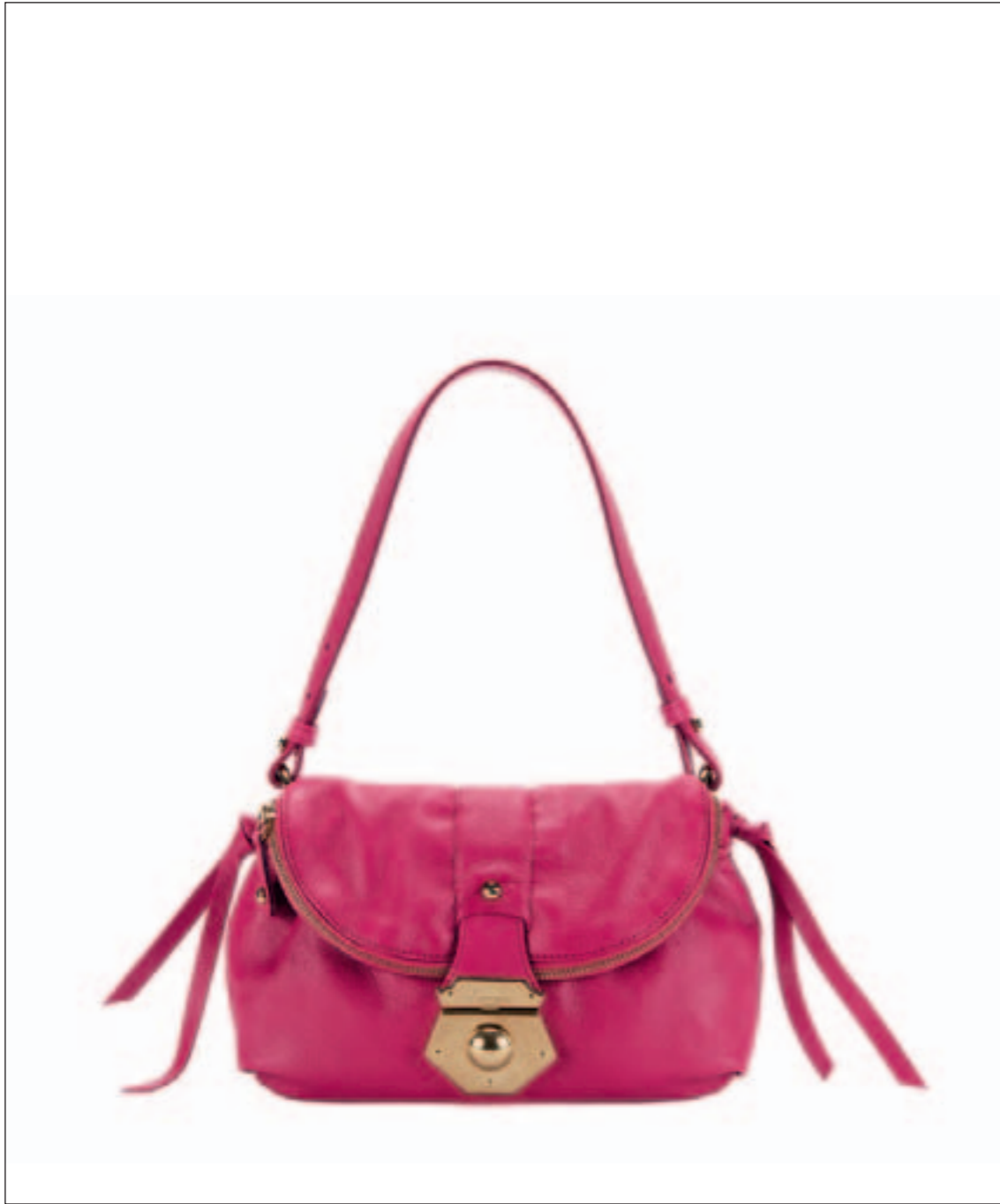




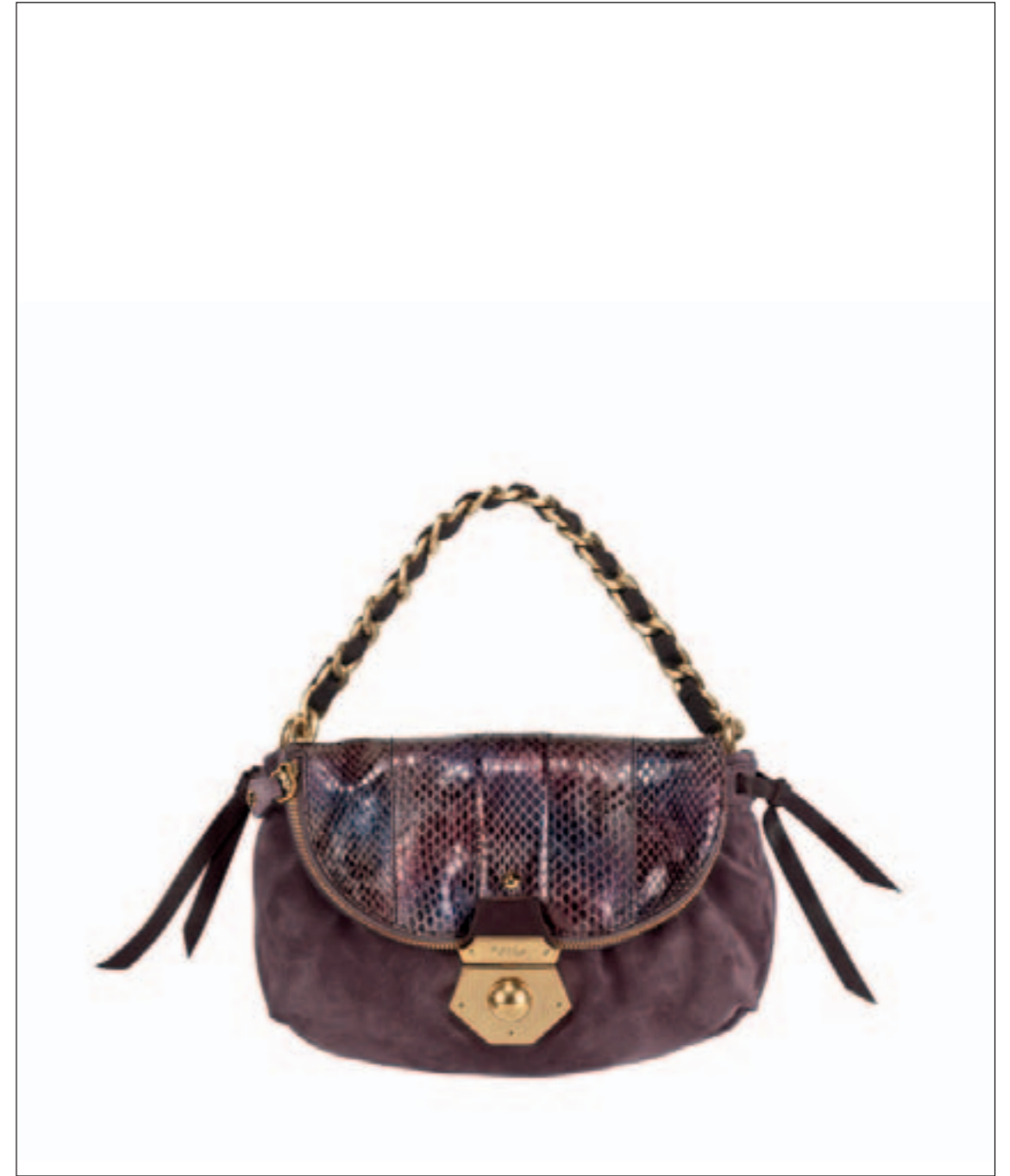
TATE BY41
Quilted Calf Leather of Velvety Effect+Astrakhan+Shiny Goat, Sand+Musk+Coffee
cm 36x36x12



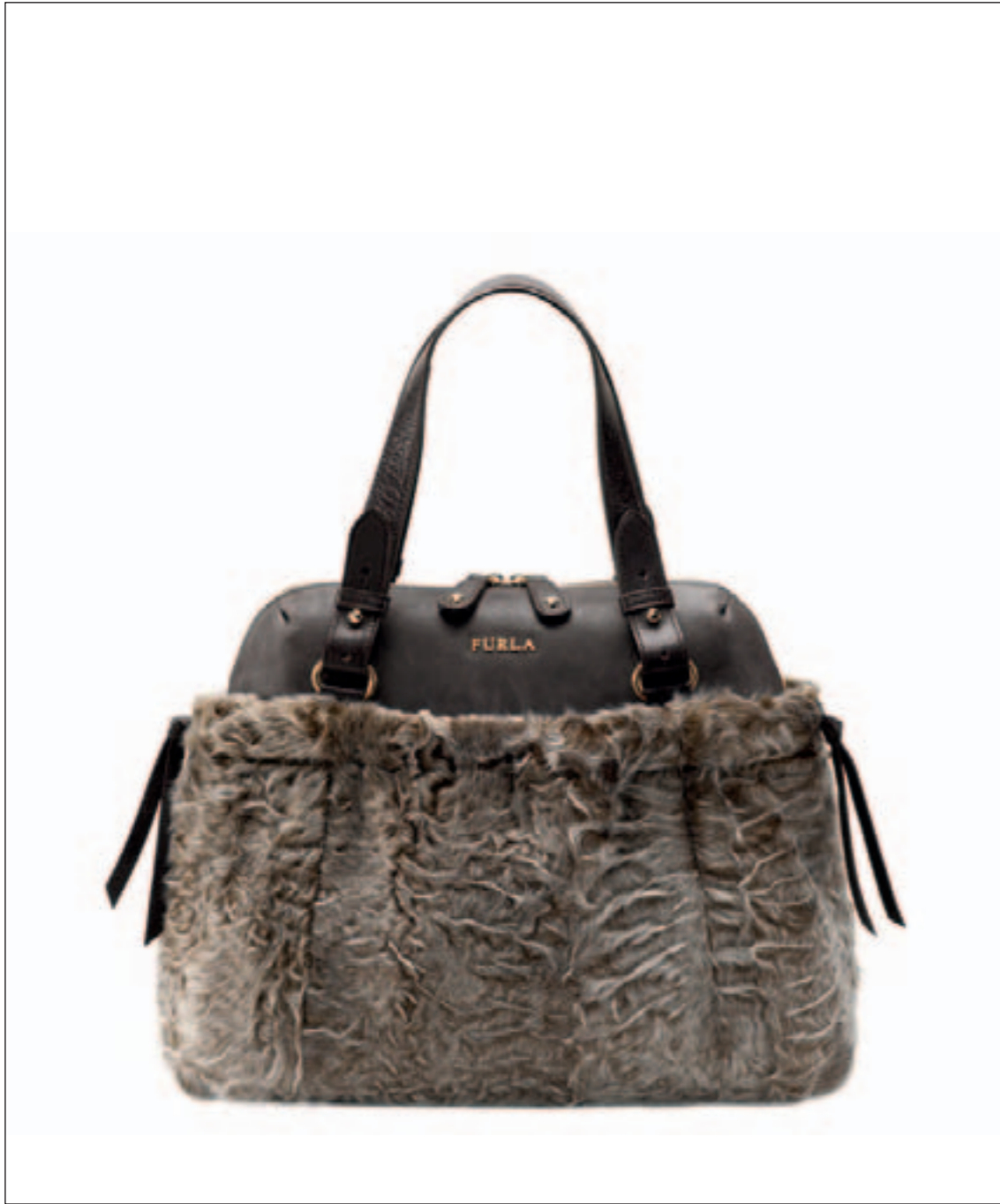
TATE BY41
Shiny Goat, Fuchsia
cm 36x36x12



TATE B087
Shiny Goat, Fuchsia
cm 26x17



TATE B132
Suede+Shaded Ayers, Berry+Aubergine
cm 26x17



TATE BX64
Astrakhan+Velvety Effect Calf Leather+Shiny Goat, Musk+Coffee
cm 33x28x11

available also in Suede+Shiny Goat



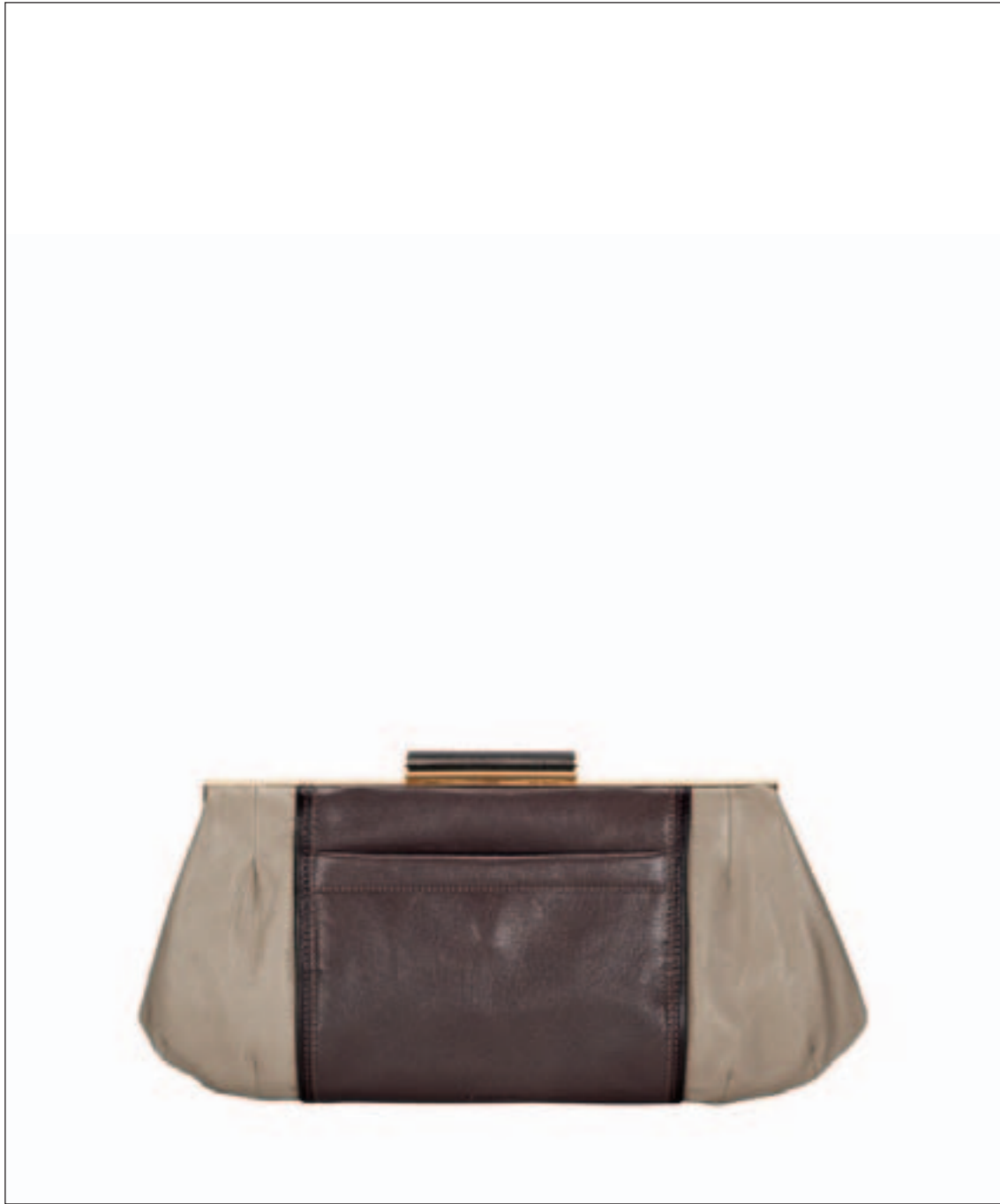
TATE BX64
Gobelin Fabric+Shiny Goat, Multicolor+Red Earth
cm 33x28x11



SOMERSET B078
Shiny Goat, Sand+Clay Brown+Coffee
cm 51x34x10



SOMERSET B078
Shiny Goat, Clay Brown+Red Earth+Coffee
cm 51x34x10



SOMERSET B089
Shiny Goat, Sand+Clay Brown+Coffee
cm 37x18x4



SOMERSET B089
Shiny Goat, Clay Brown+Red Earth+Coffee
cm 37x18x4



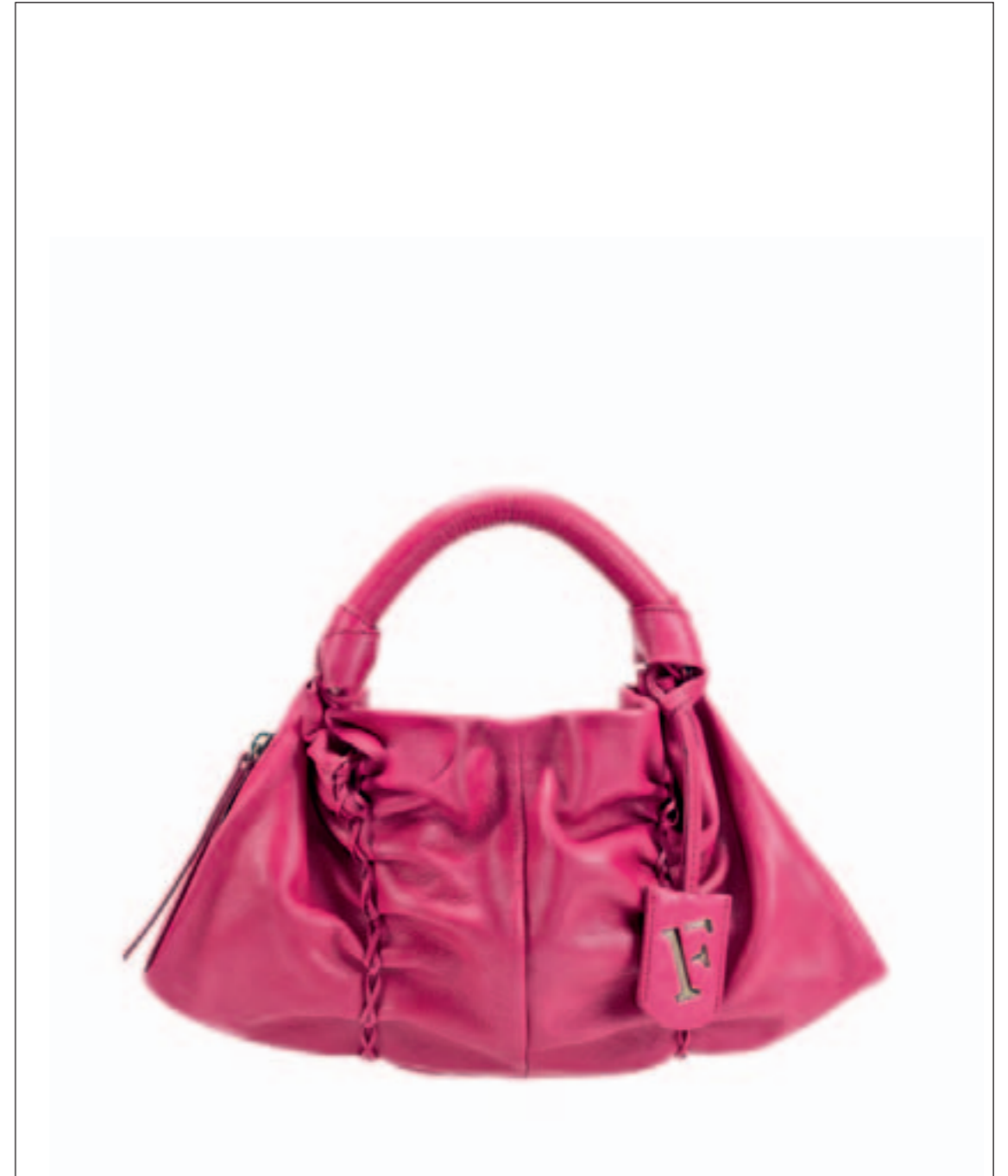
UBU BZ41
Mink+Soft Nappa Leather, Onyx
cm 48x32



UBU B056
Mink+Soft Nappa Leather, Clay Brown
cm 35x20



UBU BZ40
Velvety Effect Calf Leather, Coffee
cm 56x37



UBU B056
Shiny Goat, Fuchsia
cm 35x20



GAM BW60
Deer Grain Printed Calf Leather+Shiny Vegetal Calf Leather, White+Onyx
cm 34x31x10



GAM B114
Velvety Effect Calf Leather+Shiny Vegetal Calf Leather, Onyx
cm 40x35x11

FURLA

AUTUMN WINTER 2010-2011 SHOES

A new elegance with a contemporary approach presents femininity as lived day by day with irony and cheerfulness.

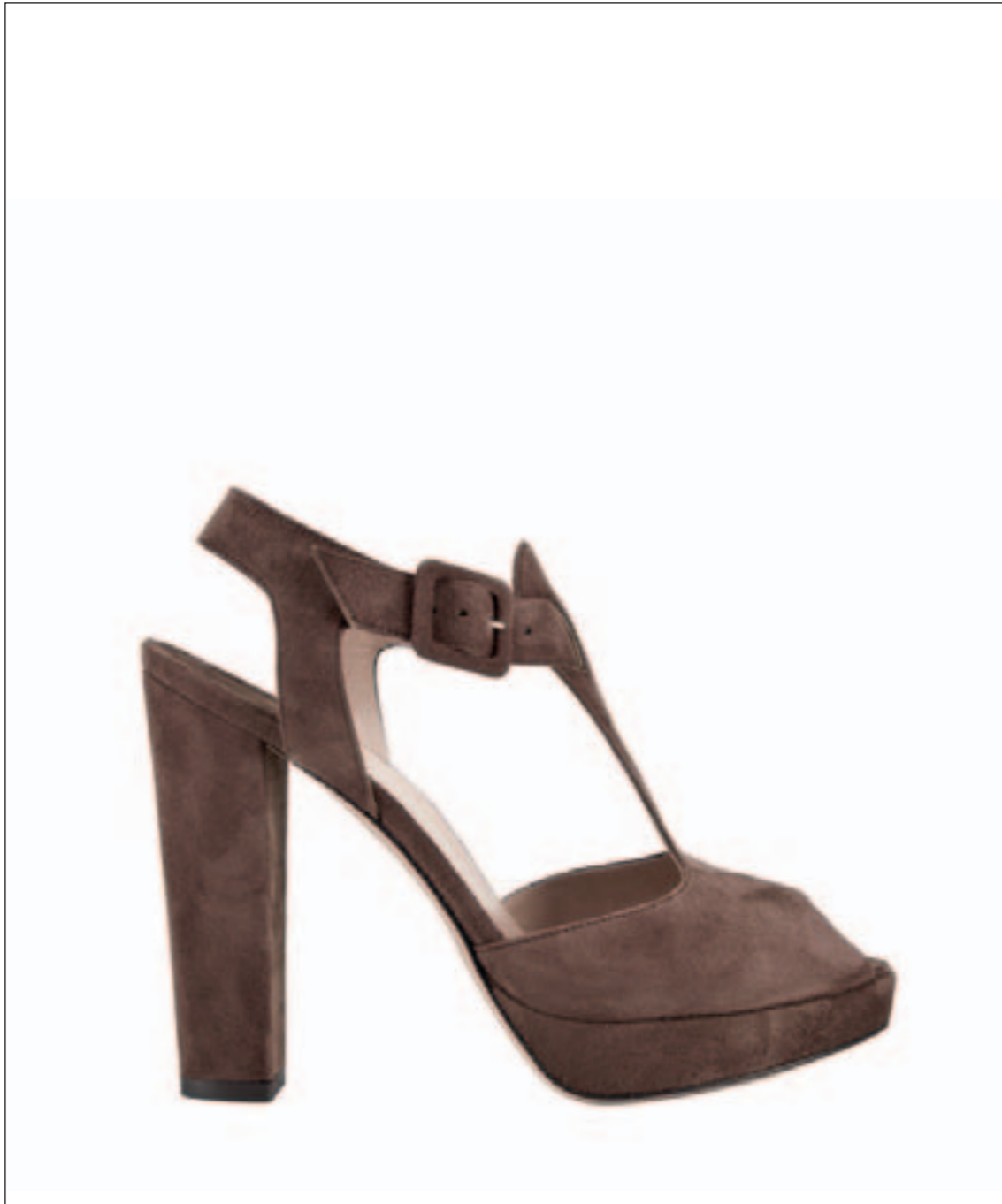
Elegant silhouettes and feminine shapes designed to be both functional and stylish, plus ease and comfort have inspired Furla's new shoe collection for autumn/winter 2010-2011.

Understated styles with sophisticated and classic shapes play on cuts and lengths while rubber bands give a modern edge to the shoes.

A casual-chic interpretation is obtained by the use of particular and gritty leathers like velvet effect calf leather, soft nappa leather, Himalayan leopard printed calfskin suede, crust leather and deer printed calfskin.

Sporty models are re-shaped in a sophisticated and feminine way. A tank sole characterizes boots, sandals to wear with stockings and booties in crust leather or deer. Details and astrakhan turn-ups on boots give a touch of frivolity.

Warm colours of the autumn permeate the whole collection and create a metropolitan look with echoes of emotions and memories of remote journeys.



MEGUMI Y344
Suede, Clay Brown

available also in Suede



MEGUMI Y344
Positano Calf Leather, Ochre



GAM Y353
Deer Grain Printed Leather, Clay Brown



GAM Y353
Deer Grain Printed Leather+Astrakhan, Clay Brown



GRETA Y341
Suede+Elaphe, Aubergine



GRETA Y338
Suede+Elaphe, Aubergine



GRETA Y340
Suede+Elaphe, Onyx+Fuchsia



GRETA Y338
Suede+Elaphe, Onyx+Fuchsia



GUGGENHEIM Y361
Suede, Onyx

available also in Velvety Effect Calf Leather



ARCADIA Y351
Leopard Printed Calf Leather, Clay Brown

available also in Velvety Effect Calf Leather





AGORA' Y348
Velvety Effect Calf Leather+Soft Nappa Leather, Onyx



FORTUNY Y345
Rubber+Velvety Leopard Printed Calf Leather, Clay Brown

COLOUR RANGE AUTUMN WINTER 2010/11

